





Anti-Child-On-Child Harm
(Learning and Growing Together)

Date ratified by Governing Body	22nd January 2024
Review Cycle	Every 2 years, or when there is a change in statutory guidance or legislation.
Review Date	January 2026
Signed Headteacher	
Signed COG	



1. Objectives of this policy. This policy outlines what we will do to prevent and tackle Child-on-Child Harm.

2. Aims:

- a. To develop an understanding about the characteristics of Child-on-Child Harm and how we can work together to prevent it from occurring.
- b. Raise awareness about managing behaviour, recognising Child-on-Child Harm and having the knowledge and confidence to deal with it.
- c. We aim to tackle Child-on-Child Harm to prevent it from happening in the first place and by tackling it consistently, fairly and effectively when it does.
- d. Children need to understand what Child-on-Child Harm is, how it feels and what to do if it happens to them or if they see it happening.

3. Our school community:

- a. Discusses, monitors and reviews our Anti Child-on-Child Harm policy on a regular basis.
- b. Supports staff to promote positive relationships and identify and tackle Child-on-Child Harm appropriately.
- c. Ensures that pupils are aware that all Child-on-Child Harm concerns will be dealt with sensitively and effectively; that pupils feel safe to learn; and that pupils abide by the anti-Child-on-Child Harm policy.
- d. Reports back to parents / carers regarding their concerns on Child-on-Child Harm and deals promptly with complaints. Parents / carers in turn work with the school to uphold the anti-Child-on-Child Harm policy.
- e. Seeks to learn from good anti- Child-on-Child Harm practice elsewhere and utilises support from the Local Authority and other relevant organisations when appropriate.

4. Definition of Child-on-Child Harm: Child-on-Child Harm is an act of any repeated and intentional behaviour which is unwanted and hurts another person physically or emotionally.

- a. Child-on-Child Harm is a subjective experience and can take many forms.
- b. Child-on-Child Harm is the intentional (physical or emotional) hurting of one person by another, where the relationship involves an imbalance of power.
- c. It is usually repetitive or persistent, although some one-off attacks can have a continuing harmful effect on the victim.

Formatted: Font: (Default) Arial, English (United Kingdom)

Formatted: Font: (Default) Arial, English (United Kingdom)

Formatted: Font: (Default) Arial, English (United Kingdom)

Formatted: Font: (Default) Arial, English (United Kingdom)

Formatted: No bullets or numbering, Tab stops: 1 cm, Left + Not at 1.27 cm

Formatted

Formatted

Formatted

Formatted

Formatted

Formatted

Formatted

Formatted

Formatted

Formatted

Formatted

Formatted

Formatted

Formatted

Formatted

Formatted

Formatted

Formatted

Formatted

Formatted

Formatted: Font: (Default) Arial, Not Bold

Formatted: Font: (Default) Arial

Formatted: Font: (Default) Arial

Formatted: Font: (Default) Arial, Not Bold

Formatted: Font: (Default) Arial, Not Bold

Formatted: Font: (Default) Arial, Not Bold



- d. Child-on-Child Harm can include: name calling, taunting, mocking, making offensive comments; kicking; hitting; taking belongings; inappropriate text messaging and electronic messaging; sending offensive or degrading images by phone or via the internet; producing offensive graffiti; gossiping; excluding people from groups and spreading hurtful and untruthful rumours.

Formatted: Font: (Default) Arial, Not Bold

5. Forms of bullying covered by this policy: Child-on-Child Harm can happen to anyone. This policy covers all types of bullying including:

Formatted: Font: (Default) Arial, Not Bold

Formatted: Font: (Default) Arial

- a. Child-on-Child Harm related to race, religion or culture.

Formatted: Font: (Default) Arial, Not Bold

- b. Child-on-Child Harm related to special educational needs.

Formatted: Font: (Default) Arial, Not Bold

- c. Child-on-Child Harm related to appearance or health conditions.

Formatted: Font: (Default) Arial, Not Bold

- d. Child-on-Child Harm related to sexual orientation.

Formatted: Font: (Default) Arial, Not Bold

- e. Child-on-Child Harm of young carers or looked after children or otherwise related to home circumstances.

Formatted: Font: (Default) Arial, Not Bold

- f. Sexist or sexual bullying.

Formatted: Font: (Default) Arial, Not Bold

- g. Cyber bullying.

Formatted: Font: (Default) Arial, Not Bold

Formatted: Font: (Default) Arial, Not Bold

6. Preventing, identifying and responding to bullying: We will:

Formatted: Font: (Default) Arial, Bold

- a. Work with staff and outside agencies to identify all forms of prejudice-driven Child-on-Child Harm.

Formatted: Font: (Default) Arial

Formatted: Font: (Default) Arial, Not Bold

- b. Actively provide systematic opportunities to develop pupils' social and emotional skills, including their resilience.

Formatted: Font: (Default) Arial, Not Bold

Formatted: Font: (Default) Arial, Not Bold

- c. Consider all opportunities for addressing Child-on-Child Harm including through the curriculum, through displays, through peer support and through the School Council.

Formatted: Font: (Default) Arial, Not Bold

Formatted: Font: (Default) Arial, Not Bold

- d. Train all staff including lunchtime staff, learning mentors and learning support staff to identify Child-on-Child Harm and follow school policy and procedures on Child-on-Child Harm.

Formatted: Font: (Default) Arial, Not Bold

Formatted: Font: (Default) Arial, Not Bold

- e. Actively create "safe spaces" for vulnerable children and young people.

Formatted: Font: (Default) Arial, Not Bold

Formatted: Font: (Default) Arial, Not Bold

Formatted: Font: (Default) Arial, Not Bold

7. Involvement of pupils: We will:

Formatted: Font: (Default) Arial, Bold

- a. Ensure pupils know how to express worries and anxieties about Child-on-Child Harm.

Formatted: Font: (Default) Arial

Formatted: Font: (Default) Arial, Not Bold

Formatted: Font: (Default) Arial, Not Bold

Formatted: Font: (Default) Arial, Not Bold



MERRIOTT & HASELBURY PLUCKNETT PRIMARY SCHOOLS FEDERATION

- a. This Policy only works if it ensures that the whole school community understands that Child-on-Child Harm is not tolerated and understands the steps that will be taken to both prevent and respond to Child-on-Child Harm.
- b. It is the responsibility of:
- i) School Governors to take a lead role in monitoring this policy.
 - ii) Governors, the Headteacher, Senior Managers, Teaching and Non-Teaching staff to be aware of this policy and implement it accordingly.
 - iii) The Headteacher to communicate the policy to the school community.
 - iv) Pupils to abide by the policy.

* DCSF Guidance "Safe to Learn: Embedding anti-bullying work in schools"

<http://www.teachernet.gov.uk/wholeschool/behaviour/tacklingbullying/safetolearn>

** <https://www.anti-bullyingalliance.org.uk>

Formatted: Font: (Default) Arial, Not Bold

Formatted: Font: (Default) Arial, Not Bold

Formatted: Font: (Default) Arial, Not Bold

Formatted: Font: (Default) Arial, Not Bold

Formatted: Font: (Default) Arial, Not Bold

Formatted: Font: (Default) Arial, Not Bold

Formatted: Font: (Default) Arial, Not Bold

Formatted: Font: (Default) Arial, Not Bold

Formatted: Font: (Default) Arial

Formatted: Font: (Default) Arial, English (United Kingdom)

Formatted: Font: (Default) Arial, English (United Kingdom)

Formatted: Font: (Default) Arial, English (United Kingdom)

Formatted: Font: (Default) Arial, English (United Kingdom)

Formatted: Font: (Default) Arial, English (United Kingdom)

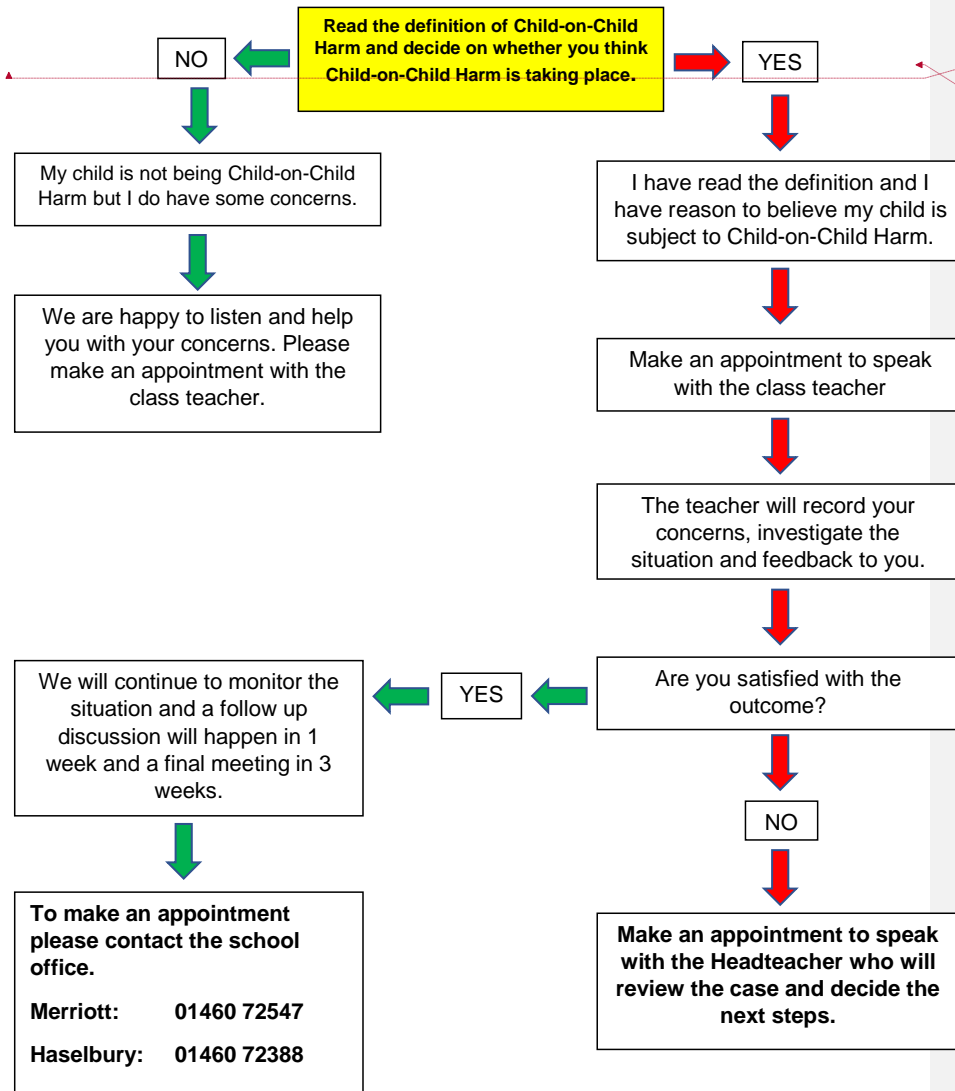
Formatted: Font: (Default) Arial



Parent Concern Flow Chart

Child-on-Child Harm is an act of any repeated and intentional behaviour which is unwanted and hurts another person physically or emotionally.

Formatted: Font: 14 pt
Formatted: Font: 11 pt
Formatted: Font: Not Bold



Formatted: Font: Bold
Formatted: Normal, Add space between paragraphs of the same style

Please be aware that the school will record and keep all incidents of Child-on-Child Harm and report Child-on-Child Harm data and statistics to the Governing body termly.